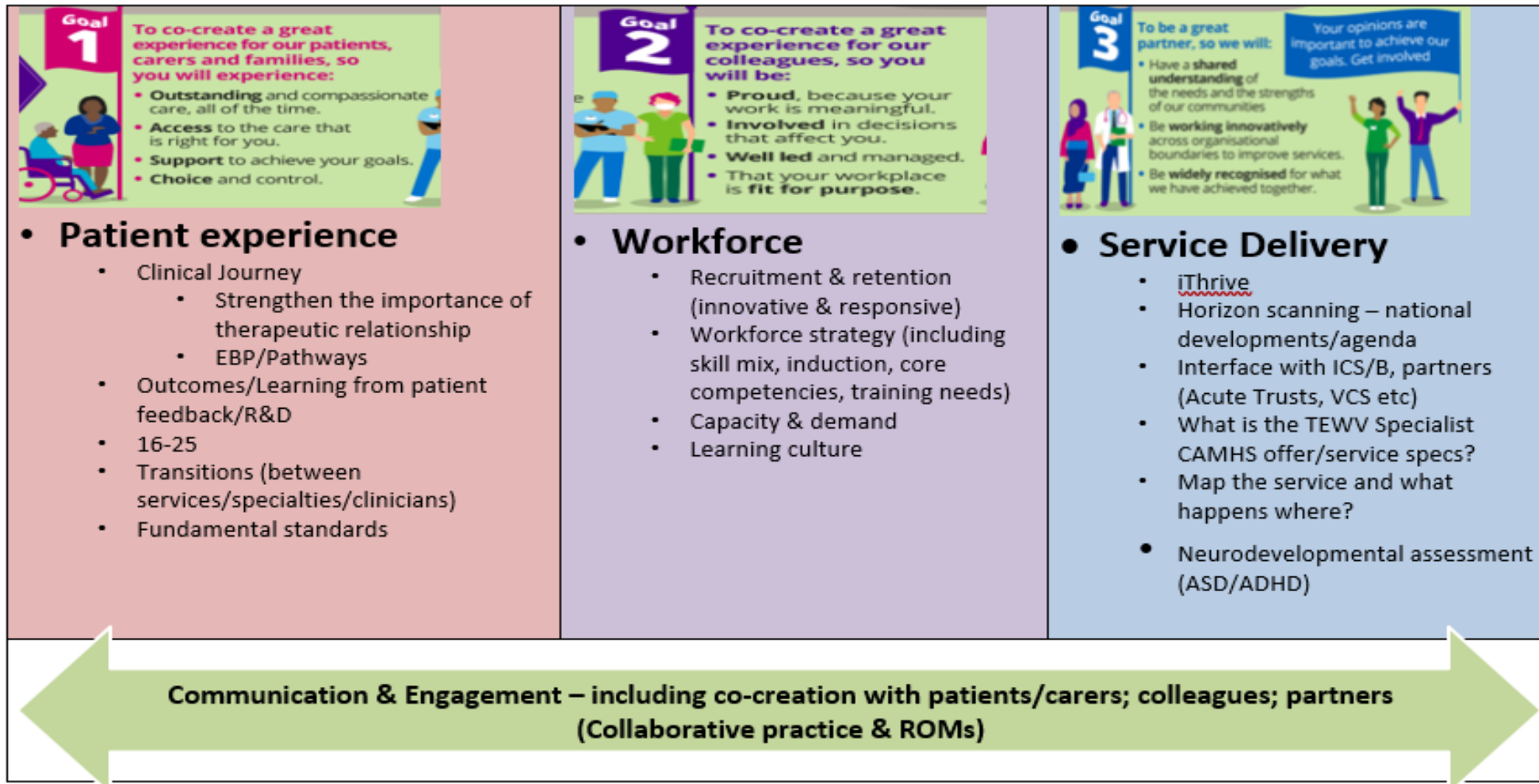




Children & Young People's Services Darlington

December 2022



Children & young people's services

- Patient experience

- CAMHS cocreation/participation lead started in post November
- Successful pilot of improved assessment process in Darlington; undertaken by the Single Point of Access team
- Extensive work with Darlington PCF on the Neurodevelopmental pathways

- Workforce

- Successful recent recruitment episodes in Darlington CAMHS; team fully established
- Full capacity and demand analysis nearing completion
- Job/post specification review underway to provide greater flexibility with regards to essential skills, qualifications and experience

- Service delivery

- New workstream set up to further embed i-Thrive principles of advice and early help; internally and externally
- Further developments on the Neurodevelopmental pathway including sensory programme and training package for schools
- Work with CDDFT to improve pathways for those with mental health needs accessing paediatric inpatients

CQC report (following re-inspection):

- Report published September 2022, from inspection in July 2022
- 'Safe' rating improved from 'inadequate' to 'requires improvement'
- Evidence that positive changes had been made since inspection of June 2021
 - Community service found to have a good safety track record, and effective systems for incident monitoring
 - Staff understood safeguarding procedures well
 - Achieving target for waits to assessment
 - Waiting times for treatment had improved
 - 100% compliance with Keeping in Touch process for all waiters
 - Training compliance improved to 91.4%
- Improvements still required
 - Ensuring there is enough staff in each team
 - Further improvement to training compliance
 - Further improvement to waits for treatment

Waits

Waiting to assessment

- Average 12 days in Darlington (non-neuro referrals)
- No YP waiting more than 1 month

Waiting to Treatment

- Average 173 days in Darlington (73 YP waiting)
- Almost all of the 73 YP waiting now have appointments arranged between Nov-Jan
- Strict definition of 'treatment', the support offered by the teams while young people are waiting for medical or therapeutic intervention is considered 'treatment' in other CAMHS services

Waits (Specialist neurodevelopmental assessment)

- **Waiting to Assessment**
- Average wait is currently 359 days
- 635 YP waiting for Autism/ADHD assessments
 - 68 waiting 2 or more years
 - 165 waiting 1-2 years
- Significant backlog created during lockdowns
- 300% increase in referrals post-lockdowns
- Team working at capacity to get through waiting list
- Additional services being commissioned to provide support to families and education with needs associated with neurodiverse conditions (diagnosis not necessary to access)

Next steps:

- Full review of neurodevelopmental pathway
- Review of offer for Adverse childhood experiences/trauma (high prevalence within neurodevelopmental referrals)
- Roll out of key worker roles for learning disabilities/autism
- Strengthening advice and early help offer
- Improving experience of those with mental health needs within paediatric wards